

Balancing Sustainability and Risk in Offsite Construction

A presentation about Innovaré Offsite's delivery of net zero building and risk management

Gareth Ellison, Director - Innovaré Offsite

30th November 2023

Introducing Innovaré



- One of the UK's Leading providers of energy efficient structures since 2005
- Our mission and values reflect our respect & dedication to our customers & our sense of social responsibility
- Part of the Osborne Group
 - 2005 Established
 - 2007 Manufacturing unit set up
 - 2017 Relocated to new 65,000sqft facility
 - 2020 Secured DfE MMC1 Offsite Framework
 - 2023 Acquired by the Bowmer + Kirkland Group of companies
- 300+ Schools delivered
- 1,000+ Houses delivered
- 2 Grand Designs
- 2 DIY SOS
- 10 Awards

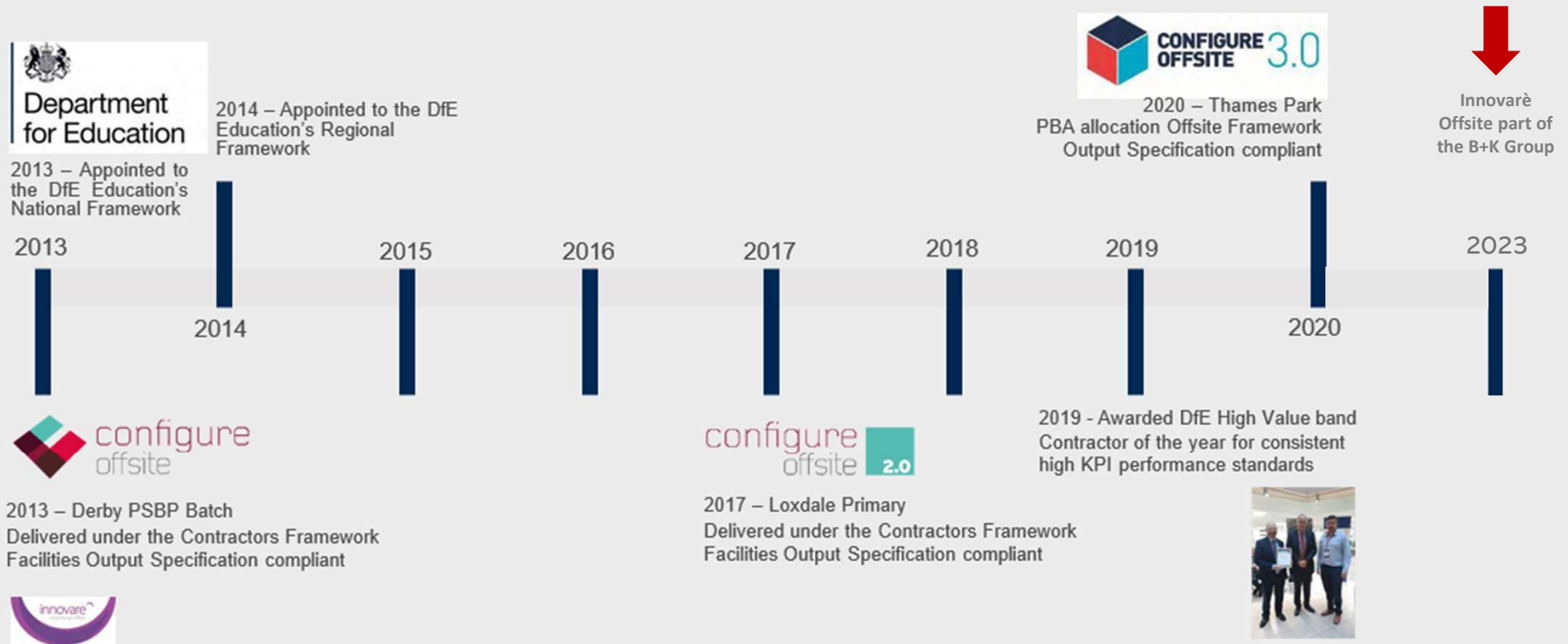


B+K & Innovaré Partnership



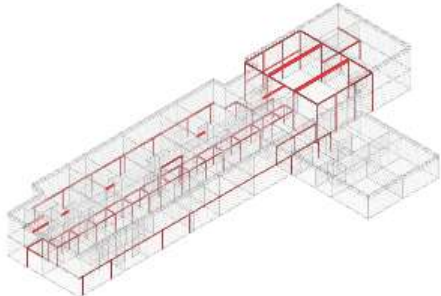
BOWMER + KIRKLAND FRAMEWORK TEAM – SEVEN YEARS OF DfE EXPERIENCE

A PROVEN TEAM WITH SHARED VALUES AND OBJECTIVES



Innovaré Our Scope

DESIGN



MANUFACTURE



INSTALL



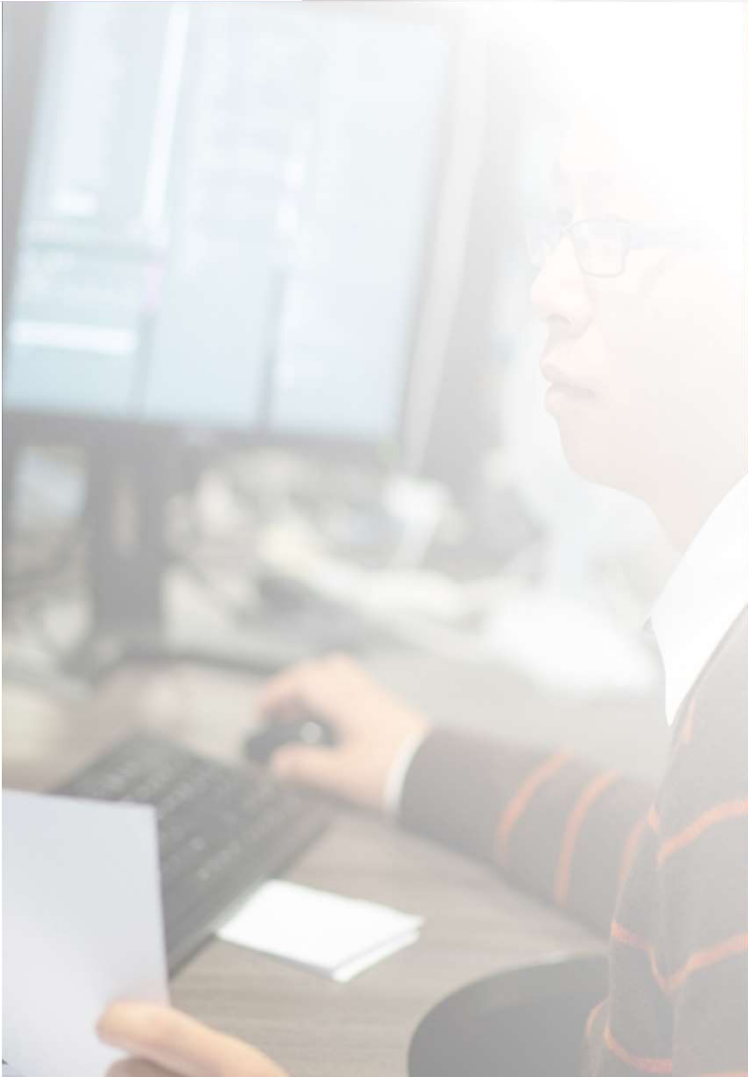
ENGINEER



SUPPLY



PROJECT MANAGEMENT



Innovaré Our Sectors



Education – Schools



Education – Academies



Education – Higher Education



Healthcare – Acute Mental Health



Residential – Student



Residential - Housing



Sustainable (Innovation)

RISK!

